

FL-2H Faces

Machine to place plastic screen "FILM" into aluminium profile, for protection.

Applies and cuts the film on both sides of the profile.

Vertical rollers adjustable in width, for a good centring and easy movement of the film profiles.

Dual drive system for a low-speed input.

Complies with CE safety and manufacturing of machinery (2006/42/EC).

The machine uses rollers as film applicator that is rotated by a motor and automatically cuts the film electrical resistance. This adequately protected.

The positioning and cutting of the film is done automatically, a sensor detects the onset of the profile, allowing the machine is then complete the process of placement.

The machine body is resistant ensuring their accuracy.

The high quality of this machine and its ease of operation make it suitable for use by operators.



ESB-64058050 C/ Puigbarral, 44 Nau 4F Pol.
Ind. Can Petit 08227 TERRASSA, BARCELONA
(SPAIN)

Tel: (+34) 93 789 29 93

Mail: export@rpaluminium.com
admin@rpaluminium.com

The logo for rp aluminium machinery, featuring a stylized 'rp' in red and black, with 'aluminium machinery' written in black below it.

FL Family

FL-2H Faces

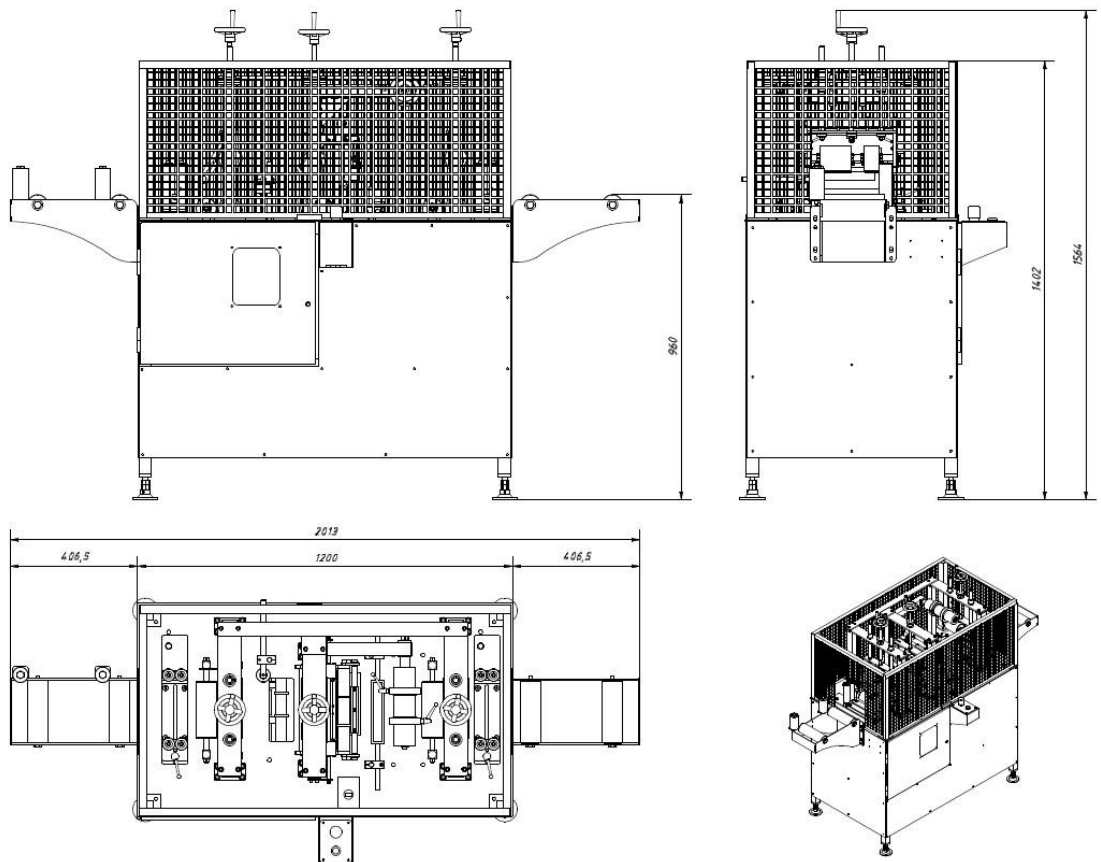
FL-2H Faces

Technical Data

Maximum length profile	Unlimited
Height max. profile	180 mm.
Width max. profile	180 mm.
Width film coil	20 a 180 mm.
Thick film coil	35 a 100 micras
Outside \varnothing film coil	300 mm.
Motor	0 / 5 CV
Working pressure	1-6 kg.
Working height	960 mm



Overall dimensions

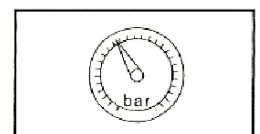
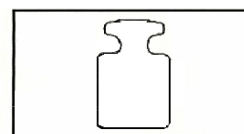


ADDITIONAL MATERIAL

- Function keys.
- Roller bench entry 0,5 m.
- Roller bench exit 0,5 m.
- Installation, use and maintenance.

OPTIONAL MATERIAL

- Roller bench entry and exit 3,9 m. Ref.: BR-1
- Roller bench entry and exit 1,85 m. Ref.: BR-2
- Downloader profiles. Ref.: DES-2



Mono 220v 1Kw –
230V –50/60 HZ

180 kg.

6 + 7 bar