

ERT-ONE

The **ERT-ONE** is a machine that has been designed to implement all kinds of joints in coextrusion, as brush weather strip.

The machine performs the insertion and automatic cutting board the same length as the profile.

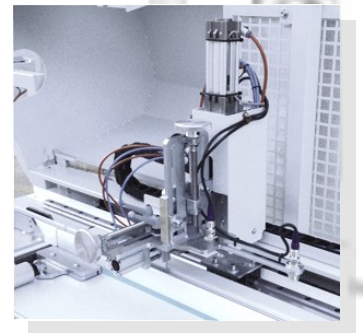
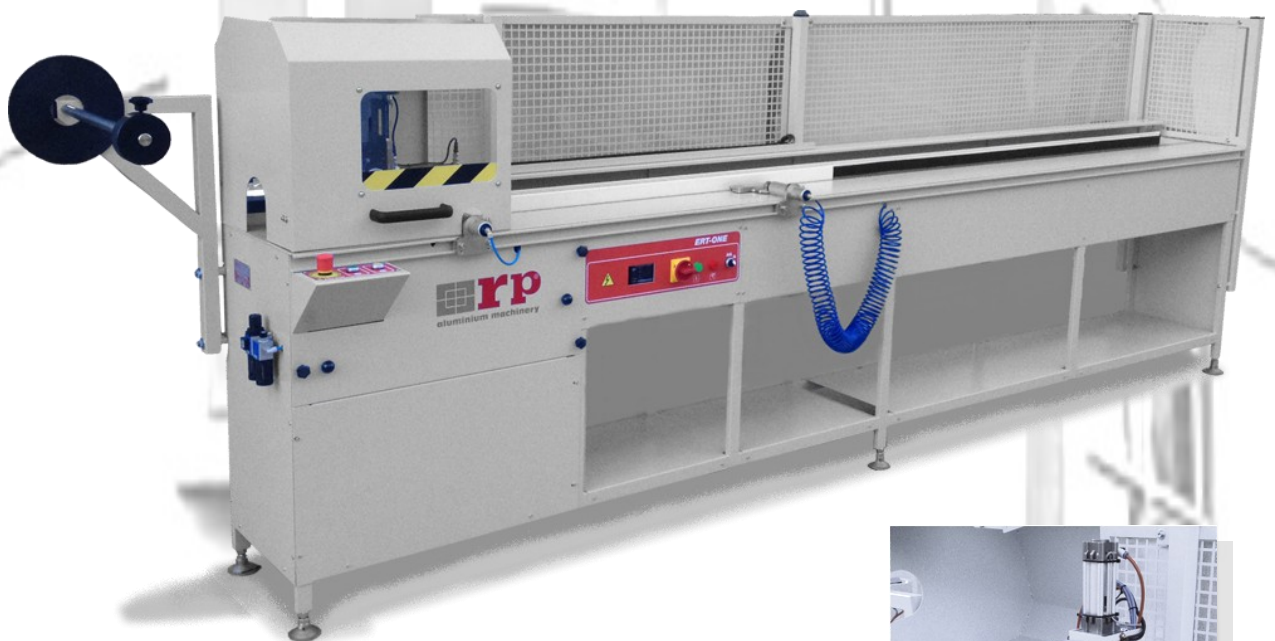
Automatic cut: 90 °.

It uses a universal head on the carriage, adjustable for all types of series, which functions as a clamp.

Pressure adjustable drag head enables the use of inductors for convenience in placing the seals.

The machine body is resistant which ensures its accuracy.

The high quality of this machine and its facility of operation make it suitable for use by the operators.



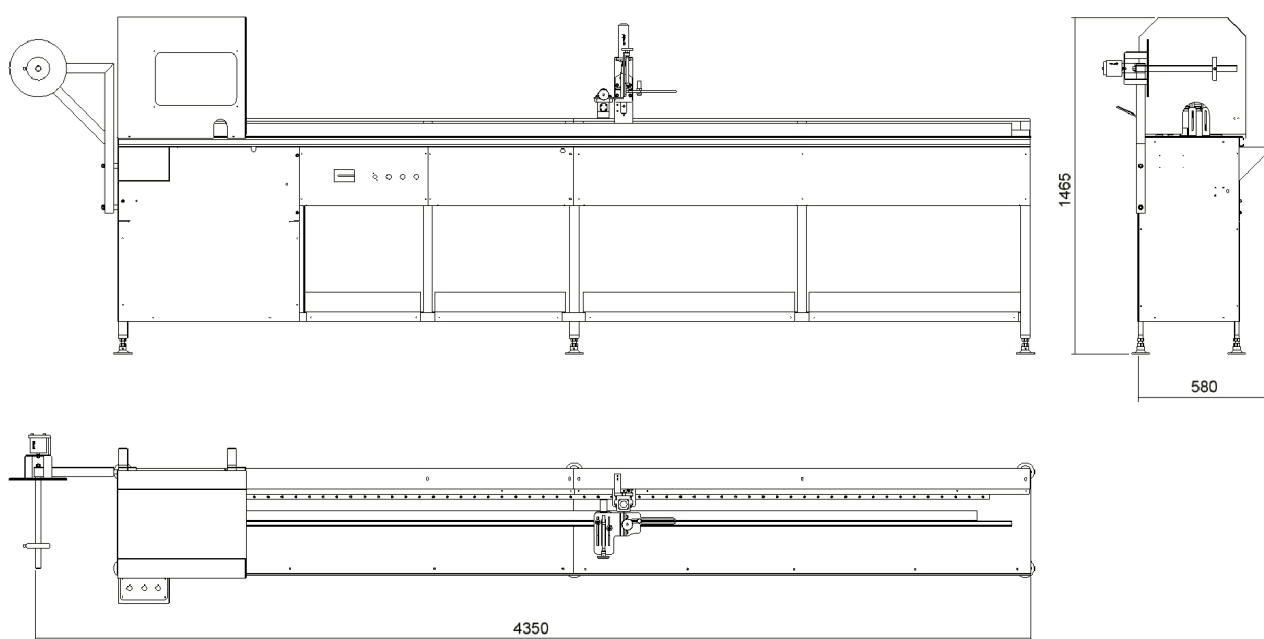
Insertion head

ESB-64058050 C/ Puigbarral, 44 Nau 4F Pol.
Ind. Can Petit 08227 TERRASSA, BARCELONA
(SPAIN)

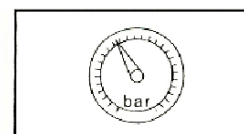
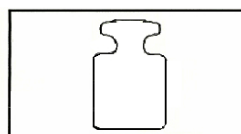
Tel: (+34) 93 789 29 93
Mail: export@rpaluminium.com

ERT Family**ERT-ONE****Technical Data**

Length max. Profile	3,4 m.
Height max. profile	120 mm
Width max. Profile	130 mm
Motor	0,55kw 2/5 CV
Working pressure	1-6 kg.
Size mm	4350x580x1465

**Overall Dimensions****ADDITIONAL MATERIAL**

Cutter of gaskets to 90°.
Adjustable universal head.
Simple reel Holders.
Installation, use and maintenance.



Mono 220v 1Kw –
230V –50/60 HZ

250 kg.

6 +7 bar