

ERT-ONE DUO

Machine to implement all kinds of joints in coextrusion, as brush weather strip.

The machine performs the insertion and automatic cutting board the same length as the profile, it works in two profiles at the same time.

Automatic cut: 90°.

It uses a universal head on the carriage, adjustable for all types of series, which functions as a clamp.

Pressure adjustable drag head enables the use of inductors for convenience in placing the seals.

The machine body is resistant which ensures its accuracy.

The high quality of this machine and its facility of operation make it suitable for use by the operators.



ESB-64058050 C/ Puigbarral, 44 Nau 4F Pol.
Ind. Can Petit 08227 TERRASSA, BARCELONA
(SPAIN)

Tel: (+34) 93 789 29 93
Mail: export@rpaluminium.com
admin@rpaluminium.com


aluminium machinery

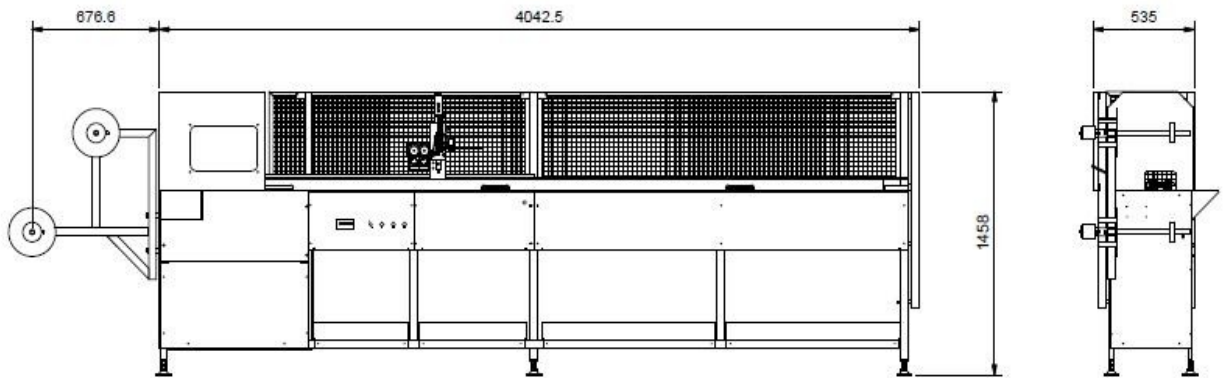
ERT-ONE DUO

ERT Family

ERT-ONE DUO

TECHNICAL DATA

Length max. Profile	3.400 mm x2
Height max. profile	80 mm
Width max. Profile	60 mm
Motor	0,55kw 2/5 CV
Working pressure	1-6 kg.
Height work	940 mm
Size mm.	4.042x535x1.458

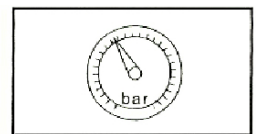
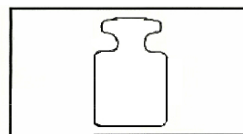


OVERALL DIMENSIONS



ADDITIONAL MATERIAL

- Cutter of gaskets in 90°.
- Adjustable universal head.
- Double reel Holders with pneumatic brake. (4 Holders).
- Installation, use and maintenance in the appropriate language.



Mono 220v 1Kw –
230V –50/60 HZ

250 kg.

6 +7 bar