

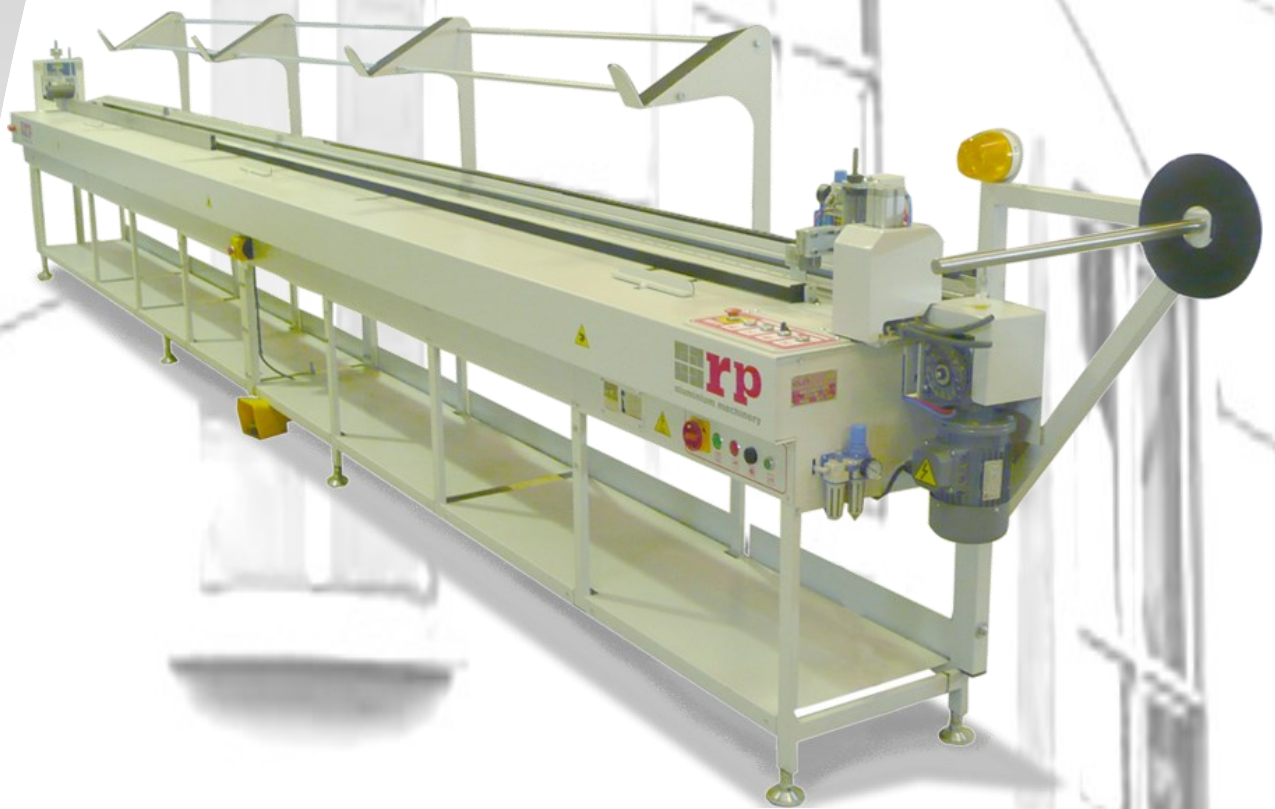
# ERT-65 CU

Tool machine that has been designed to implement all kinds of gaskets in coextrusion, as brush weather stripping.

Uses an interchangeable head.

The court is automatic.

The body of the machine is resistant what assures his precision.



ESB-64058050 C/ Puigbarral, 44 Nau 4F Pol.  
Ind. Can Petit 08227 TERRASSA, BARCELONA  
(SPAIN)

Tel: (+34) 93 789 29 93  
Mail: [export@rpaluminium.com](mailto:export@rpaluminium.com)  
[admin@rpaluminium.com](mailto:admin@rpaluminium.com)

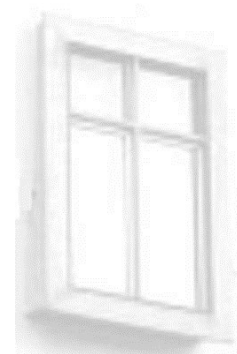
**ERT-65 CU**

ERT Family

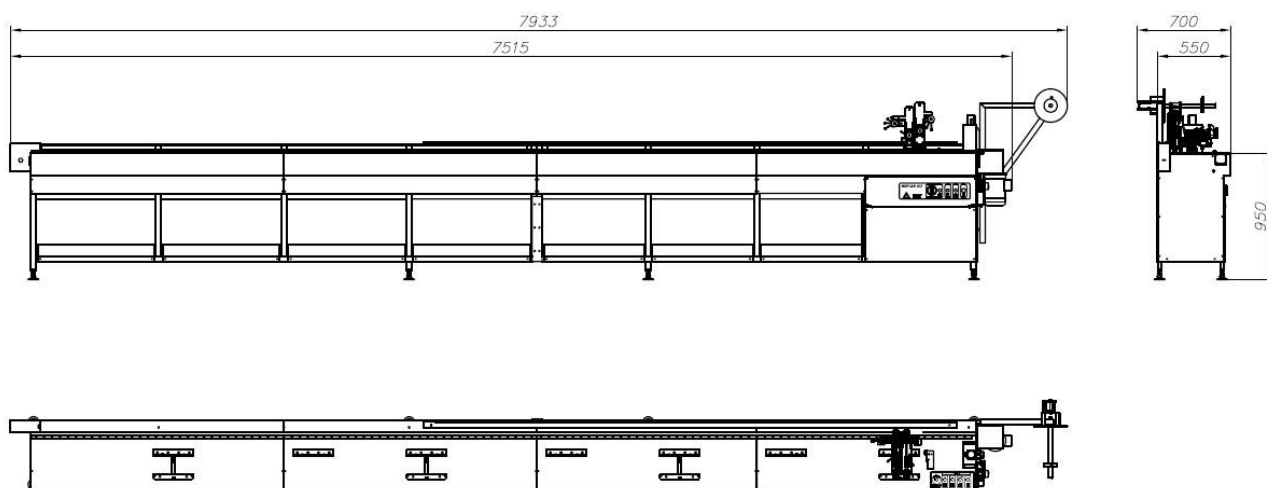
## ERT-65 CU

## Technical Data

Length max. Profile	6,5 m
Height max. profile	120 mm
Width max. Profile	120 mm
Motor	0,55 kW 3/4 CV
Working pressure	1-6 kg.
Height of work	940 mm
Size mm.	7500 x 600 x 1100



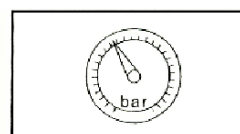
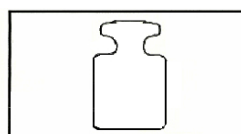
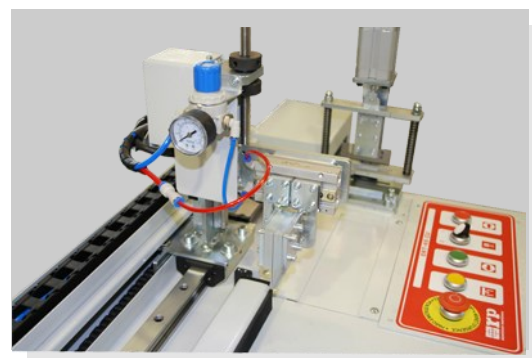
## Overall Dimensions

**ADDITIONAL MATERIAL**

Adjustable universal head.  
Installation, use and maintenance.

**OPTIONAL MATERIAL**

Roller table for exit profiles.  
Support bars.  
Big reel holder.



Mono 220v 1Kw –  
230V –50/60 HZ

480 kg.

6 + 7 bar



ERT-65 CU