

AJB-6000 (200)

This machine should be used for insertion and cutting gaskets of metal and wood profiles.

The high quality of this machine and its ease of operation makes it suitable for use by operators.

The machine uses a roller like applicator of the gaskets and rotating by a motor and cut the board with a saw. This adequately protected.

The insertion of the gaskets at the beginning of the profile is done manually, allowing the machine is then complete the process of insertion.

The machine body is resistant which ensures its accuracy.



ESB-64058050 C/ Puigbarral, 44 Nau 4F Pol.
Ind. Can Petit 08227 TERRASSA, BARCELONA
(SPAIN)

Tel: (+34) 93 789 29 93

Mail: export@rpaluminium.com

admin@rpaluminium.com

AJB Family

AJB-6000 (200)

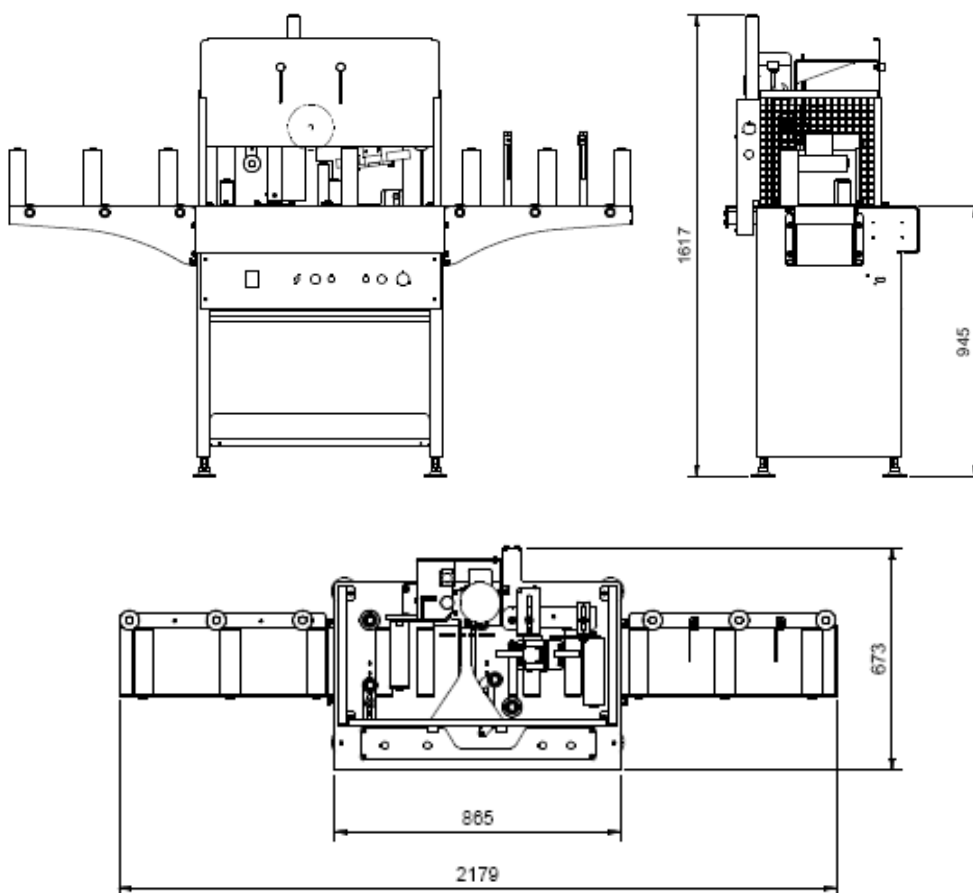
AJB-6000 (200)



Technical Data

Length max. Profile	Unlimited.
Height max. profile	200 mm.
Width max. Profile	200 mm.
Motor	1 / 4 CV
Working pressure	1-6 kg.
Working height	940 mm
Size mm.	Without arm 865x673x1617 With arm 2179x673x1617

Overall Dimensions

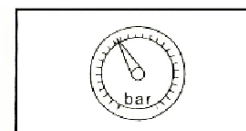
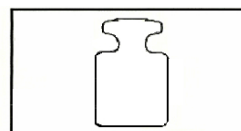


ADDITIONAL MATERIAL

- Roller arm, left input.
- Roller arm, right output.
- Functions Keys.
- Installation, use and maintenance.

OPTIONAL MATERIAL

- Rollers for apply gaskets.
- Gasket roll: single, double, double with mechanical brake, triple and quadruple.
- Roller bench input and output 1'8 m.
- Roller bench input and output 3'9 m.



Mono 220v 1Kw –
230V –50/60 HZ

155 kg.

6 +7 bar